

# EVINRUDE ICON



**EVINRUDE**  
E-TEC®







# FROM THE MAKERS OF THE ULTIMATE OUTBOARD... EVINRUDE ICON GAUGES.

THE ULTIMATE GAUGES ARE HERE. FROM THE NO-NONSENSE BASIC SERIES TO THE FUNCTION-FILLED PRO SERIES, EVINRUDE ICON OFFERS BOATERS ALL THE GAUGES THEY EVER WANTED. ADD ACCESSORY GAUGES TO KEEP AN EYE ON EVERY LITTLE DETAIL.



## ICON PRO GAUGES

- ICON PRO offers digital performance wrapped in an analog look with increased functionality in an LCD window.
- Specialized functions include GPS speed, fuel management, fuel economy, trip logs and many more.
- It's plug and play. Connects directly into the existing Evinrude NMEA 2000 network.
- Works on Evinrude E-TEC 40-hp through 300-hp
- Supports up to 5 engines
- Supports up to 4 fuel tanks
- Accessory gauges provide dedicated display of water pressure, fuel level, battery volts, engine trim, engine temperature and oil tank level.
- Multi-language support
- Anti-fog lens
- Engine fault display

## ICON BASIC GAUGES

- ICON Basic offers digital performance with an analog look.
- Basic functions in a high value, lower cost package
- User Friendly – no buttons to push, no setup required. Just straight accurate engine information
- It's plug and play. Connects directly into the existing Evinrude NMEA 2000 network.
- Easy plug and play daisy chain connections between the tachometer and accessory gauges simplify wiring.
- Works on Evinrude E-TEC 40-hp through 300-hp
- Supports up to 2 engines
- Supports up to 2 fuel tanks
- Multi-function 3-n-1 gauges offer high visibility and compact installation. Two gauges offer 7 major functions.
- Accessory gauges provide dedicated display of water pressure, fuel level, battery volts, engine trim, engine temperature and oil tank level.
- Engine fault warning lights
- Anti-fog lens





# EVINRUDE ICON PRO SERIES GAUGES

## TRULY THE ULTIMATE GAUGE.

ICON PRO OFFERS DIGITAL PERFORMANCE WRAPPED IN AN ANALOG LOOK WITH INCREASED FUNCTIONALITY IN AN LCD WINDOW. SPECIALIZED FUNCTIONS INCLUDE GPS SPEED, FUEL MANAGEMENT, FUEL ECONOMY, TRIP LOGS AND MANY MORE.

### RPM GAUGE

AVAILABLE IN 3.5 IN. (89MM) OR 5.0 IN. (127MM), BLACK OR WHITE DIAL FACE

#### STANDARD FUNCTIONS

RPM (needle & digital)  
Engine Temperature  
Engine Hours  
Battery Volts  
Throttle %  
Engine Trim  
Fuel Level - up to 4 fuel tanks  
Fuel Used - up to 4 tanks  
Fuel Remaining - up to 4 tanks  
Instant Fuel Flow  
Total Instantaneous Fuel Flow  
Average Fuel Flow - up to 5 engines  
Total Fuel Used  
Total Fuel Remaining  
Total Average Fuel Flow

#### Barometric Pressure - inHg / mb

GPS Speed - SOG<sup>1</sup>  
Course over ground - COG<sup>1</sup>  
Heading<sup>1</sup>  
Clock<sup>1</sup>  
Latitude and Longitude<sup>1</sup>  
Fuel Economy - MPG / KPL<sup>1</sup>  
Estimated Range<sup>1</sup>  
Engine Water Pressure<sup>2</sup>  
Oil Level<sup>2</sup>  
Sea Water Temperature<sup>2</sup>  
Depth<sup>3</sup>  
Gear Position<sup>4</sup>  
Engine Fault Display  
Auto Winterize  
Imperial & Metric Options  
Multi-language support\*

#### TRIP FUNCTIONS

Trip Data A  
Trip A Engine Hours  
Trip A Fuel Used  
Trip A Odometer<sup>1</sup>  
Trip A Fuel Flow Average  
Trip Data B  
Trip B Engine Hours  
Trip B Fuel Used  
Trip B Odometer<sup>1</sup>  
Trip B Fuel Flow Average

#### SEASONAL FUNCTIONS

Seasonal Engine Hours  
Seasonal Fuel Used  
Seasonal Odometer<sup>1</sup>  
Seasonal Fuel Flow Average

### SPEEDOMETER GAUGE

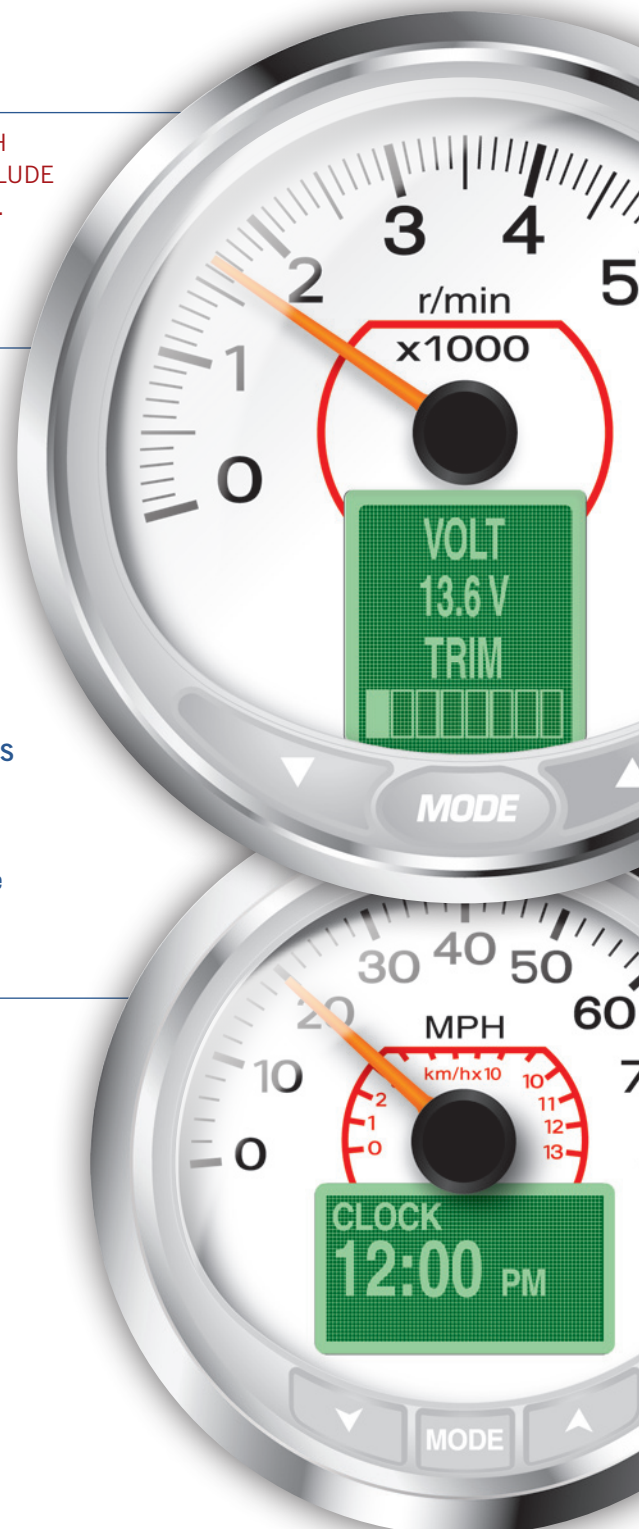
AVAILABLE IN 3.5 IN. (89MM) OR 5.0 IN. (127MM), BLACK OR WHITE DIAL FACE

#### STANDARD FUNCTIONS

Speed (needle & digital)  
RPM  
GPS Speed - SOG<sup>1</sup>  
Course over ground - COG<sup>1</sup>  
Heading<sup>1</sup>  
Clock<sup>1</sup>  
Latitude and longitude<sup>1</sup>  
Fuel Level - up to 4 fuel tanks  
Fuel Used - up to 4 tanks  
Fuel Remaining - up to 4 tanks  
Instant Fuel Flow  
Total Instantaneous Fuel Flow

#### Average Fuel Flow - up to 5 engines

Total Fuel Used  
Total Fuel Remaining  
Total Average Fuel Flow  
Fuel Economy - MPG / KPL<sup>1</sup>  
Estimated Range<sup>1</sup>  
Barometric Pressure - inHg / mb  
Sea Water Temperature<sup>2</sup>  
Air Temperature<sup>2</sup>  
Max Speed<sup>1</sup>  
Odometer<sup>1</sup>  
Paddlewheel Speed - SOW<sup>5</sup>  
Multi-language support\*



Actual Size

\* English, French, German, Spanish, Italian

<sup>1</sup> Requires GPS Antenna. <sup>2</sup> Requires Accessory Sensor. <sup>3</sup> Requires Accessory Transducer or Triducer. <sup>4</sup> Requires ICON EST. <sup>5</sup> Requires Accessory Paddlewheel or Pitot.



# EVINRUDE ICON BASIC SERIES GAUGES

## THE GAUGE YOU CAN TRUST.

ICON BASIC HAS THE TRADITIONAL LOOK OF AN ANALOG DIAL, BUT RECEIVES ITS DATA VIA THE NMEA 2000 COMMUNICATION STANDARD. THE BASIC 3.5 IN. GAUGES ARE AVAILABLE AS SPEEDOMETER AND RPM WITH SYSTEMCHECK® LIGHTS. THE BASIC 3-N-1 IS A 5.0 IN. GAUGE WITH TWO ADDITIONAL FUNCTIONS.

### 3-N-1 RPM GAUGE

AVAILABLE IN 5.0 IN. (127MM), BLACK OR WHITE DIAL FACE

RPM  
Trim  
Engine Temperature  
No Oil Warning Light  
Hot Engine Warning Light  
Check Engine Warning Light  
Low Oil Warning Light

### 3-N-1 SPEEDOMETER GAUGE

AVAILABLE IN 5.0 IN. (127MM), BLACK OR WHITE DIAL FACE

Speed  
Fuel  
Volts

### BASIC RPM GAUGE

AVAILABLE IN 3.5 IN. (89MM), BLACK OR WHITE DIAL FACE

RPM  
No Oil Warning Light  
Hot Engine Warning Light  
Check Engine Warning Light  
Low Oil Warning Light

### BASIC SPEEDOMETER GAUGE

AVAILABLE IN 3.5 IN. (89MM), BLACK OR WHITE DIAL FACE

Speed



Actual Size



# EVINRUDE ICON ACCESSORY GAUGES

## A GAUGE DEDICATED TO THE DETAILS.

ICON ACCESSORY GAUGES ARE THE PERFECT COMPLEMENT TO THE ICON PRO, ICON BASIC 3-N-1 AND ICON BASIC MAIN GAUGES. FROM ADDING A SINGLE FUEL GAUGE TO TRYING TO SIMULATE A FIGHTER JET COCKPIT, EVINRUDE ICON ACCESSORY GAUGES COMPLETE YOUR CONSOLE. THESE 2.0 IN. (51MM) GAUGES ARE AVAILABLE WITH A BLACK OR WHITE DIAL FACE.

### FUEL GAUGE AVAILABLE IN THREE VARIATIONS – FUEL 1, FUEL 2, FUEL 3

### TRIM GAUGE

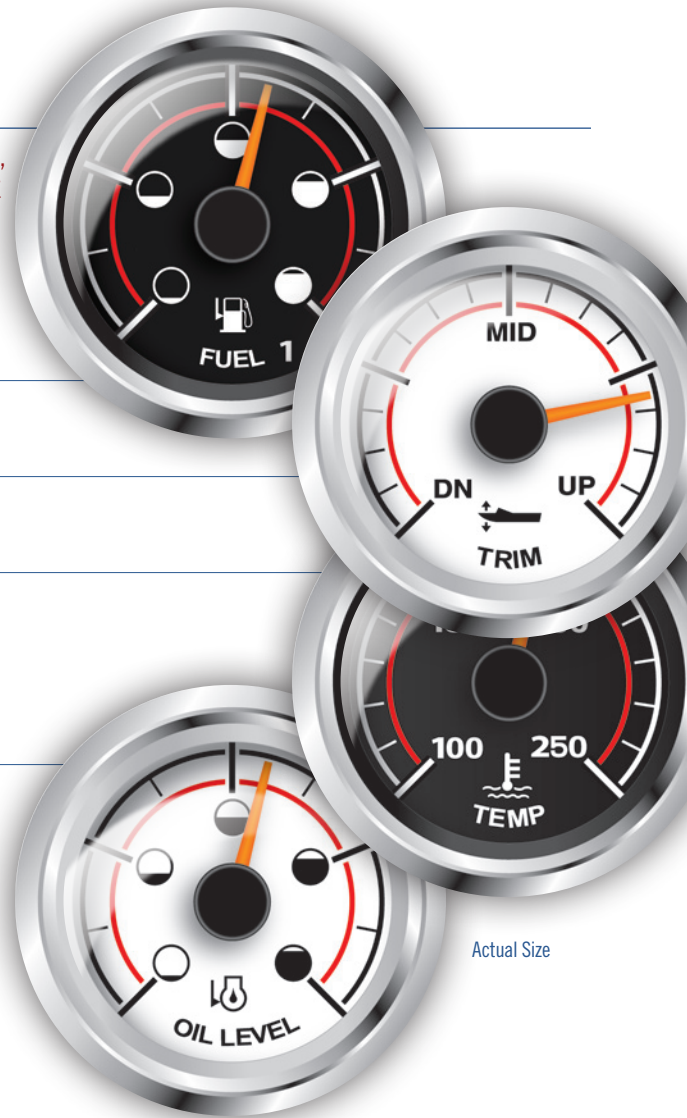
### ENGINE TEMPERATURE GAUGE

### VOLT GAUGE AVAILABLE IN THREE VARIATIONS – VOLT 1, VOLT 2, VOLT 3

### OIL LEVEL GAUGE

### WATER PRESSURE GAUGE

AVAILABLE IN TWO RANGES – 30 PSI (115HP-200HP), UP TO 60 PSI (200HP-300HP)



Actual Size

# EVINRUDE ICON CONTROL

## TOTAL CONTROL. AT YOUR FINGERTIPS.

EVINRUDE ICON IS AN ADVANCED, INTELLIGENT ELECTRONIC SHIFT AND THROTTLE SYSTEM FOR EVINRUDE E-TEC OUTBOARD ENGINES. ICON CONTROLS SUPPORT FROM ONE TO FIVE EVINRUDE E-TEC 150-HP THROUGH 300-HP MODELS INCLUDING DUAL STATION - FLYING BRIDGE APPLICATIONS. FOR NON-ICON FACTORY MODELS, AN ICON ENGINE ADD-ON KIT IS AVAILABLE TO FIT MY2008 AND NEWER, EVINRUDE E-TEC 150-HP THROUGH 300-HP MODELS.



# EVINRUDE ICON

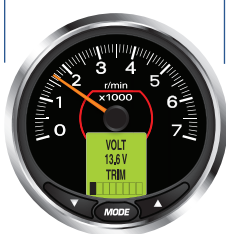
## NOW THAT YOU KNOW WHAT ICON GAUGES CAN DO, SELECTING THEM IS EASY.

Evinrude offers a selection of ICON gauges, allowing you to customize your console to your exact needs. Select ICON main gauges from the Pro Series, Basic 3-n-1 or Basic, below. Available in two colors, accenting your boat is as simple as black and white.

### ICON PRO 5.0

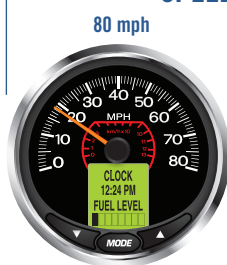
5 IN. (127mm)

#### RPM GAUGE

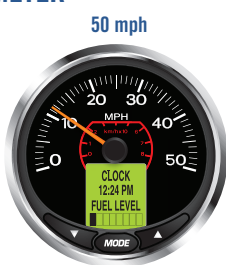


766162 Black

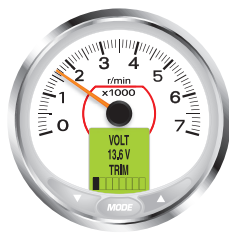
#### SPEEDOMETER



766169 Black



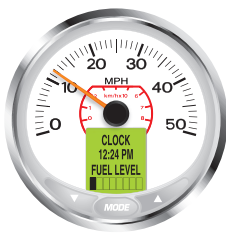
766170 Black



766185 White



766192 White



766193 White

### ICON PRO 3.5

3.5 IN. (89mm)

#### RPM GAUGE



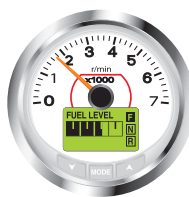
766161 Black



766168 Black



766167 Black



766184 White



766191 White



766190 White

### ICON ACCESSORY

Select accessory gauges to complement your rpm gauge and speedometer.

#### FUEL

##### TANK 1



766176 Black

##### TANK 2



766177 Black

##### TANK 3



766178 Black



766199 White



766200 White



766201 White

#### VOLT

##### BATTERY 1



766179 Black

##### BATTERY 2



766180 Black

##### BATTERY 3



766181 Black



766202 White



766203 White



766204 White

#### WATER PRESSURE

##### 30 PSI



766171 Black

##### 60 PSI



766172 Black



766194 White

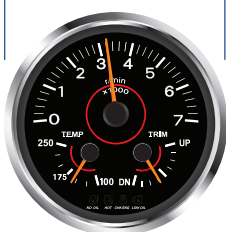


766195 White



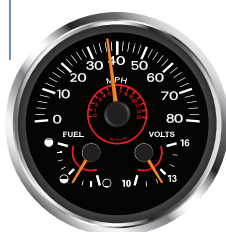
## ICON BASIC 3-N-1 5 IN. (127mm)

### RPM GAUGE



766160 Black with Engine Temp. & Trim

### SPEEDOMETER

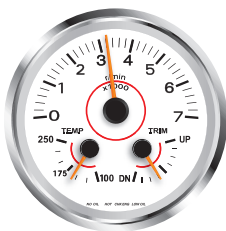


766166 Black with Fuel & Volt

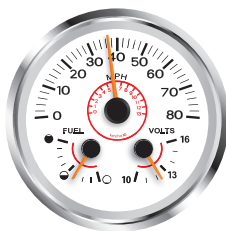
### RPM GAUGE



766159 Black



766183 White with Engine Temp. & Trim



766189 White with Fuel & Volt



766182 White



766165 Black



766188 White

### SPEEDOMETER

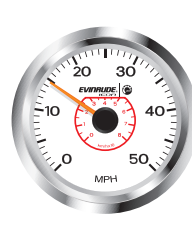
80 mph

50 mph

30 mph



766164 Black



766187 White



766163 Black



766186 White

2 IN. (51mm)

### OIL LEVEL



766174 Black



766197 White

### TRIM



766173 Black



766196 White

### ENGINE TEMP.



766175 Black



766198 White

## ADDITIONAL ACCESSORIES

P/N	Description
766114	ICON Basic backlight adjustment kit Note: Optional with ICON Basic gauge to provide backlight dimming.
765510	Harness, fuel level input, 3rd & 4th tank level display Note: Needed to add Fuel Tank input for Tank 3 and 4. Use on ICON PRO.
765349	GPS antenna - SOG input
764193	Paddle Wheel Kit - SOW input
764334	Triducer, transom mount, SOW/Depth/Seawater temp
764336	Triducer, thru-hull, plastic, SOW/Depth/Seawater temp
764335	Transducer, transom mount, Depth /Seawater temp (no Speed)

## WATER PRESSURE SENSOR APPLICATIONS

P/N	Description	HP Range	Model Year	Pressure Range
5008300	Block Mounted Sensor	115HP - 300HP	2008 - 2011	0 - 30 PSI
5008640	Block Mounted Sensor	115HP - 300HP	2012 & newer	0 - 50 PSI
765038	NMEA Network Based Sensor	40HP - 90HP	2008 & newer	0 - 100 PSI



## THE WORLD IS OUR PLAYGROUND

Nothing is more valuable than your playtime. That is why BRP is dedicated to continually finding new and better ways to help you enjoy your favorite powersports. From snow to water to both on-and-off road fun, our passion for adventure fuels the innovations that result in the ultimate powersports experience for our customers. We value



the land and water we play on and are committed to protecting it. Our desire to thrill is paired with an emphasis on rider responsibility, placing personal safety above all else. So that each outing can be the most enjoyable, memorable and thrilling experience possible. Because your free time should always be your best time.

[www.brp.com](http://www.brp.com)



SKI-DOO® SEA-DOO® CAN-AM®  
LYNX® EVINRUDE® JOHNSON® ROTAX®